

# PROGRESSIVE WEB APPS

The Complete Guide To Building Fast, Reliable Web Apps



A progressive web app is a website transformed into a mobile app in a browser.

# 01

# 02

PWAs have online and offline access, push notifications, synchronization in the background. You don't even need a URL address to switch to full-screen mode.

## PWA BENEFITS

Boosting User Experience and Business Performance



## PWA ADVANTAGES FOR USERS

PWA has high productivity because it deals with the local cache, and fewer requests.

# 01

A PWA weighs less than native apps.

# 02

Users can view content with a limited Internet connection.

# 03

It's quicker to install PWA.

## DIFFERENCES BETWEEN PWA, NATIVE, AND WEB APPS



### Native App 01

Native apps are designed for Android and iOS and installed on a mobile device via Google Play and App Store.



### 02 Web App



The web app runs in a browser on a remote server, and you needn't install it on the device.



### Progressive Web App 03



Like web apps, PWAs don't have full access to mobile device hardware, don't need to be installed, and are updated automatically.



## WHAT DOES PWA DO

To make a PWA from a website, you need to comprise the service worker and the manifest.json file.

### Service Worker

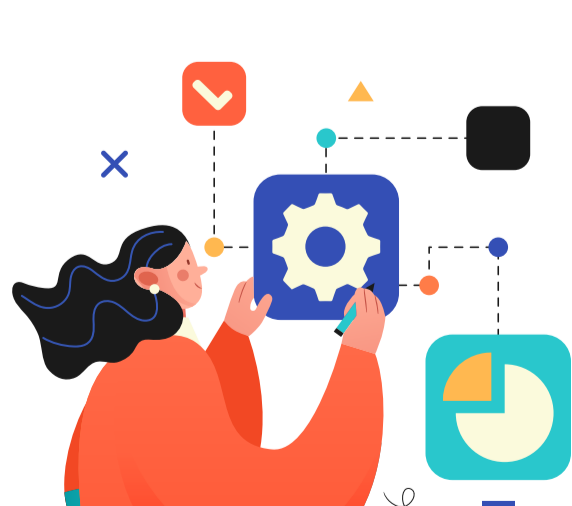
A service worker (SW) is a file that's run in the browser in the background.

The manifest file is a JSON file that helps developers to control how your PWA should be launched

### Manifest File

## WHEN A PWA DEVELOPMENT PREVAILS OVER THE WEBSITE?

- The app doesn't need advanced features.
- Interaction for the app with native features like geolocation or Bluetooth is unnecessary.
- The user interface doesn't need customization.



- Want to enter the market quickly, but your time and budget are limited.
- You need your app to work on different OS and devices.

PWAs are inexpensive to build but have limitations, especially on iOS. Cross-platform apps built with Flutter are an alternative.